



# *House Staff*

2008-2009

- 1** **York Hospital**  
1001 South George Street, P.O. Box 15198, York, PA 17405-7198 851-2345
- 2** **Apple Hill Medical Center**  
25 Monument Road, York, PA 17403
- 11** **Workfirst**  
2250 East Market Street, York, PA 17402 851-1600

## WellSpan Dialysis

---

### WellSpan Dialysis

- 13a** 308 St. Charles Way, York, PA 17403 851-6500
- 17b** 43 Columbus Avenue, Littlestown, PA 17340 359-8110
- 14** **Specialty Clinics**  
1101 Edgar Street, York, PA 17403 851-2427
- 18** **VNA Home Health**  
218 East Market Street, York, PA 17403 846-9900
- 19** **Sleep Lab**  
4020 Carlisle Road, Dover, PA 17315
- 22** **Cherry Tree Cancer Center**  
773 Cherry Tree Court, Hanover, PA 17331 633-9573
- 24** **WellSpan Center for Mind/Body Health**  
140 Pine Grove Commons, York, PA 17403 851-5590
- 25** **York Hospital Pain Relief Center**  
400 Pine Grove Commons, York, PA 17403 812-2055

## WellSpan Behavioral Health

---

### WellSpan Behavioral Health

- 12** 3542 Concord Road, York, PA 17402 840-0970  
(Child and Adolescent Services at the Meadowlands)
- 12** 3550 Concord Road, York, PA 17402 840-1767\*
- 28** 781 Far Hills Rd., New Freedom
- 14** 1101 South Edgar St., York 851-1500
- 29** 1575 Bannister St., York 845-6641
- 15** 195 Stock Street, Suite 306, Hanover, PA 17331 632-4020\*
- 30** 102 Goode Dr., Suite 2, Lancaster, PA 17603 481-7840\*

\*EAP Services



## York Hospital Lab and Imaging Services

---

- 3** **Stony Brook Lab Services**  
3995 East Market Street, York, PA 17402 757-4976
- 6** **Queensgate Lab Services**  
Queensgate Shopping Center, Springwood Road, York, PA 17403 851-2500
- 7** **Windsor Lab & Imaging Services**  
3065 Windsor Road, Red Lion, PA 17356 851-1775
- 10** **Westgate Lab Services**  
1550 Kenneth Road, York, PA 17404 764-3351
- 16** **East Berlin Lab & Imaging Services**  
105 Fourth Street, East Berlin, PA 17316 848-3641
- 20** **WellSpan Health Center**  
3065 Windsor Road, Red Lion, PA 17356  
(*Lab & Imaging Services*) 851-1775
- 21** **WellSpan Dover Health Center**  
4020 Carlisle Road, Dover, PA 17315  
(*Lab & Imaging Services*) 851-6490  
4020 Carlisle Road, Dover, PA 17315
- 23** **WellSpan Stonebridge Health Center**  
13515 Wolfe Road, New Freedom, PA 17349  
Stonebridge Diagnostic Center (*Lab & Imaging Services*) 812-2520
- 27** **WellSpan Hayshire Health Center**  
2775 North George St., York, PA  
(*Lab & Imaging Services*) 812-7300
- 4** **WellSpan Imaging (MRI)**  
2064 Springwood Road, York, PA 17403 843-0385
- 5** **East York Imaging Services (*Imaging*)**  
2250 East Market Street, York, PA 17402 851-1850

## WellSpan Pharmacies

---

### WellSpan Pharmacy

- 9a** 1001 South George Street, P.O. Box 15198, York, PA 17405-7198 851-2712
- 9b** 25 Monument Road, Suite 265, York, PA 17403 741-8150
- 9c** 755 South Pleasant Avenue, Dallastown, PA 17313 851-1351

## WellSpan ReadyCare

---

### WellSpan ReadyCare

- 26a** 1011 Edgar Street., York, PA 17403 851-1566
- 26b** 2250 East Market Street, York, PA 17402 851-1566

*This House Staff brochure includes only residents and fellows who serve in a full-time capacity at the York Hospital. House Staff on rotation from other institutions as well as more than 400 medical students from various medical schools, including Drexel University, Jefferson Medical College, Lake Erie College of Osteopathic Medicine, Milton S. Hershey Medical Center and the University of Pennsylvania, are not shown here. Rotating house staff and medical students all receive York Hospital IDs and can be identified by their badge.*

*Educational programs are provided by the attending staff, coordinated by full-time physician program directors and coordinators, and are under the administrative direction of the Director of Medical Education, Richard W. Sloan, M.D., R.Ph. and the Administrative Director of Medical Education, David J. Emrhein, M.A., M.Ed.*



**Mohamed Fouzi  
Abdul Hameed**  
Minsk State Medical Institute  
Internal Medicine R-1



**Nailah M. Abdulbaaqee**  
Meharry Medical College  
Family Medicine R-2



**Rose Valentine Antoine**  
Drexel University  
Emergency Medicine R-1



**Khadija Awan**  
King Edward Medical College  
Ob/Gyn R-2



**Arulnithi Ayyanathan**  
Sri Ramachandra Medical College  
Internal Medicine R-2



**Khaled F. Basiouny**  
University of Alabama  
Surgery R-5



**Amanda L. Beattie**  
Temple University  
Surgery R-3



**Brent A. Becker**  
University of Maryland  
Emergency Medicine R-2



**Anju M. Chacko**  
JSS Medical College  
Family Medicine R-2



**Kara J. Choi**  
University of Maryland  
Family Medicine R-1



**Nichole L. Christman**  
Jefferson Medical College  
Family Medicine R-3



**Deborah H. Chun**  
Temple University  
Emergency Medicine R-3



**LaTrica K. Cook**  
University of Maryland  
Internal Medicine R-1



**Hong Duc V. Dang**  
Georgetown University  
Surgery R-5



**Justin B. Davis**  
Medical College of Georgia  
Emergency Medicine R-2



**Ping N. Deng**  
Sun Yat-Sen University  
Ob/Gyn R-3



**Sunil K. Gollapalli**  
Rangaraya Medical College  
Internal Medicine R-2



**Nancy S. Graves**  
Penn State University @ Hershey  
Family Medicine R-3



**Leslie A. Greene**  
University of Maryland  
Family Medicine R-1



**Matthew D. Grove**  
Temple University  
Emergency Medicine R-3



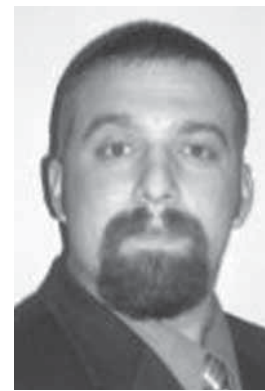
**Christopher L. Hammond**  
Des Moines COM  
Emergency Medicine R-1



**Rita B. Harrison**  
University of Connecticut  
Family Medicine R-3



**Charles F. Henderson**  
UMDNJ/New Jersey Medical School  
Internal Medicine R-3



**Thomas J. Henderson**  
Drexel University  
Emergency Medicine R-3



**Nnenna N. Ikegbu**  
University of Nigeria  
Family Medicine R-2



**Bret C. Jacobs**  
Lake Erie COM  
Family Medicine R-1



**Nitesh K. Jain**  
Kampegowda Institute of Medical  
Sciences  
Internal Medicine R-5



**Blaine A. Keister**  
University of Pennsylvania  
Dental R-1



**Sana Khan**  
Penn State University @ Hershey  
Emergency Medicine R-2



**Zahra Kiran**  
Allama Iqbal Medical School  
Family Medicine R-2



**Venkata M. Koyya**  
Andhra Medical College  
Internal Medicine R-2



**Rahul Kumar**  
Sardar Patel Medical College  
Internal Medicine R-1



**Debora E. Bensi**  
*Instituto Universitario De Ciencias De La Salud*  
 Family Medicine R-2



**Vipul Bhatia**  
*Byramjee Jeejeebhoy Medical College*  
 Internal Medicine R-1



**Glenn R. Bloom**  
*Southern Illinois University*  
 Emergency Medicine R-2



**Lavanya Bojja**  
*Siddhartha Medical College*  
 Family Medicine R-3



**Stacea N. Bowen**  
*SUNY @ Downstate*  
 Ob/Gyn R-3



**Amanda L. Bowman**  
*Philadelphia COM*  
 Ob/Gyn R-1



**R. Alfredo Calderon**  
*University of Maryland*  
 Dental R-1



**Renee N. Carter**  
*New York Medical College*  
 Surgery R-4



**Katherine L. Dively**  
*University of Maryland*  
 Dental R-1



**Ning Feng**  
*Tongji Medical College*  
 Internal Medicine R-2



**Roseann J. Freundel**  
*West Virginia SOM*  
 Ob/Gyn R-4



**Ashwani K. Garg**  
*Government Medical College Patiala*  
 Internal Medicine R-3



**Kirsten Gee**  
*University of Toledo*  
 Emergency Medicine R-1



**Habte D. Ghebrekidan**  
*Temple University*  
 Internal Medicine R-3



**Kenneth Gilrain**  
*Drexel University*  
 Emergency Medicine R-2



**Lawrence J.R. Goldhahn**  
*Temple University*  
 Emergency Medicine R-1



**Kyle A. Herron**  
*Ross University*  
 Surgery R-5



**Nicole M. Holliday**  
*University of New England COM*  
 Emergency Medicine R-2



**Lisa A. Hopkins**  
*Rosalind Franklin Univ/Chicago Med School*  
 Surgery R-4



**Daniel J. Hornyak**  
*University of Maryland*  
 Emergency Medicine R-2



**Stephanie Anne S. Horst**  
*Penn State University @ Hershey*  
 Surgery R-2



**Caliste I. Hsu**  
*Medical College of Wisconsin*  
 Surgery R-4



**Ian M. Hughes**  
*St. George's University*  
 Emergency Medicine R-1



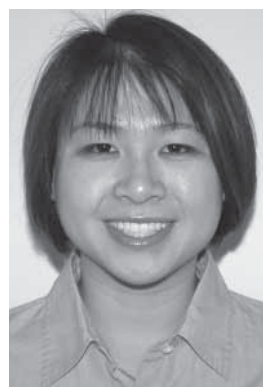
**Tinh K. Huyn**  
*Rosalind Franklin Univ/Chicago Med School*  
 Emergency Medicine R-3



**Munish Lapsia**  
*JJM Medical College*  
 Internal Medicine R-1



**Michelle M. Law**  
*University of North Texas HSC COM*  
 Emergency Medicine R-3



**Kimthuy T. Le**  
*University of Louisville*  
 Emergency Medicine R-2



**Michael Y. Lee**  
*Penn State University @ Hershey*  
 Surgery R-2



**Noelle E. Lee**  
*Penn State University @ Hershey*  
 Family Medicine R-2



**Julie R. Lehr**  
*University of Maryland*  
 Dental R-1



**Tom Lin**  
*Penn State University @ Hershey*  
 Family Medicine R-1



**Jeffrey S. Litt**  
*Lake Erie COM*  
 Surgery R-1



**Jessica M. Luckenbaugh**  
Penn State University @ Hershey  
Family Medicine R-1



**Yannira Lugo**  
Universidad Catolica Madre y  
Maestra  
Internal Medicine R-1



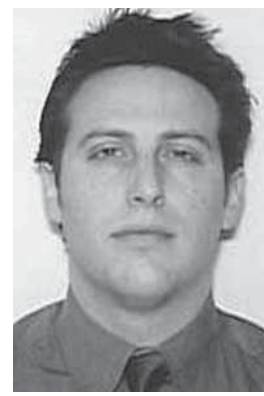
**Nicholas A. Lumsden**  
Eastern Virginia Medical School  
Family Medicine R-1



**Kristin J. Malefyt**  
Penn State University @ Hershey  
Family Medicine R-1



**Roslyn V. Mallory**  
Howard University  
Ob/Gyn R-3



**J. William Mathewson**  
St. George's University  
Surgery R-5



**Mary A. McCumber**  
Kirksville COM  
Emergency Medicine R-1



**Robert G. McHugh**  
University of New England COM  
Emergency Medicine R-1



**George N. Onderko**  
Ohio University COM  
Internal Medicine R-3



**Svetlana K. Onderko**  
Ohio University COM  
Internal Medicine R-3



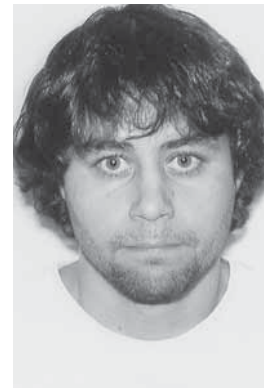
**Minesh N. Patel**  
KJ Somaiya Medical College  
Internal Medicine R-3



**Muralidhar Pathikonda**  
MS Ramaiah Medical College  
Internal Medicine R-3



**Prashant V. Patil**  
Mahadevappa Rampure Medical  
College  
Internal Medicine R-2



**Stephen J. Perchellet**  
University of Kansas  
Emergency Medicine R-3



**Jeffery M. Pinnow**  
University of Minnesota  
Emergency Medicine R-2



**Priyanka**  
Byramjee Jeejeebhoy Medical  
College  
Internal Medicine R-1



**Priscilla M. Shogan**  
Philadelphia COM  
Emergency Medicine R-3



**Jagdeep Singh**  
University of Maryland  
Dental R-1



**Amanda M. Stahl**  
American University of the Caribbean  
Ob/Gyn R-2



**Jessica S. Starner**  
Penn State University @ Hershey  
Family Medicine R-3



**Borislav G. Stoev**  
Kirksville COM  
Emergency Medicine R-3



**George Stojan**  
University of Belgrade  
Internal Medicine R-1



**Kari B. Stuntz**  
University of Maryland  
Dental R-1



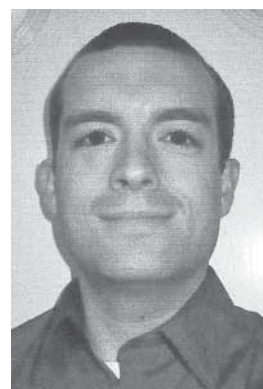
**Robert M. Stuntz**  
University of Maryland  
Emergency Medicine R-1



**Veeranna Vibhuti**  
Karnataka Institute of Medical  
Sciences  
Internal Medicine R-2



**Peter V. Viriassov**  
University of New England COM  
Emergency Medicine R-2



**Jonathan B. Walker**  
Oklahoma State University COM  
Emergency Medicine R-3



**Ryan M. Walker**  
American University of the Caribbean  
Surgery R-1



**Joshua M. Wallet**  
Jefferson Medical College  
Surgery R-3



**Eric M. Wells**  
Penn State University @ Hershey  
Emergency Medicine R-3





**Mark A. Miller**  
Lake Erie COM  
Gyn/Onc Fellow  
2nd Year



**Kyran O. Mitchell**  
University of Pennsylvania  
Surgery R-2



**Laine A. Montgomery**  
George Washington University  
Family Medicine R-1



**Roberto A. Moran Bojorquez**  
Howard University  
Emergency Medicine R-3



**M. Shahzeb Munir**  
Gr. T. Popa Iasi Univ of Medicine &  
Pharmacy  
Internal Medicine R-2



**Munima Nasir**  
Aga Khan University  
Family Medicine R-2



**Candace D. Norwood Wilson**  
Howard University  
Ob/Gyn R-1



**Shirdi Nulliah**  
Kasturba Medical College  
Family Medicine R-2



**Anila R. Ricks-Cord**  
Howard University  
Ob/Gyn R-4



**Chad J. Roach**  
University of Chicago/Pritzker  
Emergency Medicine R-2



**James P. Ryan, V**  
University of North Carolina  
Surgery R-1



**Julia M. Scott**  
Kansas City University COM  
Emergency Medicine R-1



**Mobin Shah**  
Ambedkar Medical College  
Internal Medicine R-1



**Chetan L. Sharma**  
Kasturba Medical College  
Family Medicine R-3



**Vivek Sharma**  
Byramjee Jeejeebhoy Medical  
College  
Internal Medicine R-2



**Diane C. Shih-Della Penna**  
University of Maryland  
Surgery R-3



**Maaz Syed Ahmed**  
MS Ramaiah Medical College  
Internal Medicine R-1



**Arthur N. Thorpe, Jr**  
Howard University  
Ob/Gyn R-4



**Ann M. Tuxford**  
University of Arizona  
Emergency Medicine R-1



**Althea P. Tyndall-Smith**  
Drexel University  
Family Medicine R-3



**Sachin Vaid**  
Maulana Azad Medical College  
Surgery R-1



**DeEtte R. Vasques**  
Philadelphia COM  
Gyn/Onc Fellow  
3rd Year



**Kristina M. Veek**  
Medical College of Wisconsin  
Ob/Gyn R-1



**Dev Vibhakar**  
Kirkville COM  
Surgery R-2



**Chris T. Wetzel**  
Penn State University @ Hershey  
Family Medicine R-3



**Bryan J. Wexler**  
Tufts University  
Emergency Medicine R-1



**Hillel Wirsztel**  
American University of the Caribbean  
Family Medicine R-3



**Jameson D. Woodard**  
American University of Antigua  
Internal Medicine R-2



**Stacey L.T. Woodard**  
American University of Antigua  
Ob/Gyn R-2

1001 South George Street  
PO Box 15198  
York, PA 17405-7198  
717.851.2345 Tel  
[www.wellspan.org](http://www.wellspan.org)

